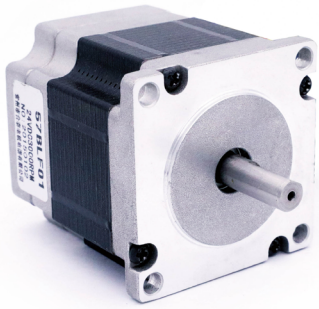


57BLF

BRUSHLESS DC MOTOR



General Specifications

Winding Type	Star
Hall effect angle	120° Electrical angle
Insulation Class	B
Ambient Temperature	-20°C~+50°C
Insulation Resistance	100MΩ Min.500VC DC
Dielectric Strength	600VAC 1 minute
Max Radial Force	115N (10mm from front flange)
Max Axial Force	45N

Technical Specifications

Model	No. of Poles	No. of Phase	Rated Voltage (VDC)	Rated Torque (N.m)	Rated Speed (RPM)	Rated Current (Amps)	Output Power (Watts)	Peak Torque (N.m)	Peak Current (Amps)	Torque Constant (N.m/Amps)	Back EMF Constant (V/kRPM)	Motor Height L (mm)	Motor Weight (kg)
57BLF01	8	3	24	0.2	3800	3.33	80	0.6	10.0	0.06	6.3	59	0.61
57BLF02			24	0.4	3000	6.67	125	1.2	20.0	0.06	6.3	80	0.94
57BLF03			24	0.6	3000	10.0	188	1.8	30.0	0.06	6.3	101	1.25
57BLF04A-001			36	0.8	3000	8.87	251	2.4	26.6	0.09	9.47	122	1.59

* Products can be customized by special request.

Wiring Diagram

FUNCTION/功能	COLOR/颜色		UL1007 26AWG
+5V	RED	红	
HALL A	YELLOW	黄	UL1015 20AWG
HALL B	GREEN	绿	
HALL C	BLUE	蓝	
GND	BLACK	黑	
PHASE A	YELLOW	黄	UL1015 20AWG
PHASE B	GREEN	绿	
PHASE C	BLUE	蓝	

Mechanical Dimension

